



Industrial Belts

Agricultural Belts

Automotive Belts



CATALOGUE **MITSUBABELTS**

2017



NEW INNOVATION

Industrial Belts Agricultural Belts Automotive Belts



BRIEF HISTORY

Thai Sin Anant Rubber Factory (2516) Co., Ltd. was established in 1973. We are one of the leading manufacturers of Power Transmission Belts in Thailand. Our highly engineered products are critical components used in diverse industries, such as Agriculture, Industrial, and Automotive.

The audit was conducted as per the Certification Guideline of the Automotive Industry for ISO/TS 16949:2002, 1st edition.

The audit was conducted as per the Certification Guideline of the Industry for ISO 9001:2008.



COMPANY ADDRESS

ADDRESS : 180/2 M.8 Suksawat 74, Bang-Kru, Phrapa-dang, Samutprakarn 10130 Thailand.
TEL : +662-463-1717
FAX : +662-463-1046
+662-840-7373

OFFICE

ADDRESS : 23 Suksawat 31, Rajhburana, Bangkok 10140 Thailand.
TEL : +662-427-7100
FAX : +662-427-7958

CUSTOMERS' BASE



Algeria , Argentina , Australia , Bangladesh , Bolivia , Chile , China , Colombia , Costa Rica , Cyprus , Ecuador , Egypt , El Salvador , Greece , Guatemala , India , Iraq , Israel , Indonesia , Iran , Italy , Japan , Jordan , Korea , Kuwait , Lebanon , Malaysia , Morocco , Myanmar , New Zealand , Nicaragua , Pakistan , Panama , Paraguay , Philippines , Saudi Arabia , Singapore , Sri Lanka , Sudan , Syria , Taiwan , Tanzania , Tukey , United Arab Emirate , USA , Venezuela , Vietnam , Yemen , Zimbabwe.

OUR CUSTOMERS

- FORD OPERATION THAILAND CO., LTD.
- CARLISLE POWER TRANSMISSION PRODUCT, INC.
- TOLIDI SANATI COOLER (IRAN) CO., LTD.
- MAZDA SALES THAILAND CO., LTD.
- INDOPARTS (PT INDOMOBIL GROUP)
- DMM (DAIHATSU MALAYSIA)
- KAWASAKI HEAVY INDUSTRIES, LTD.
- FORD INDIA PRIVATE LIMITED.
- LG ELECTONICS (THAILAND) CO., LTD.
- TOSHIBA CONSUMER PRODUCTS (THAILAND) CO., LTD.
- HITACHI CONSUMER PRODUCTS (THAILAND) LTD.
- ELECTROLUX THAILAND CO., LTD.
- PANASONIC APPLIANCES (THAILAND) CO., LTD.
- THAI SAMSUNG ELECTRONICS CO., LTD.
- CPF THAILAND CO., LTD.

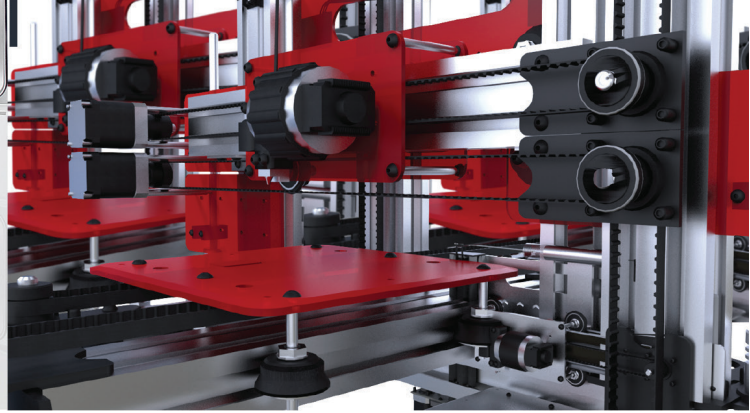
CONTENTS

INDUSTRIAL	1
CLASSICAL WRAPPED V-BELTS	2
METRIC WEDGE V-BELTS	3
CLASSICAL RAW EDGE COG BELTS	4
METRIC WEDGE COG BELTS	5
POLY V-BELTS	6
TIMING BELTS	7
AGRICULTURE	8
CLASSICAL WRAPPED V-BELTS	9
METRIC WEDGE V-BELTS	10
DOUBLE V BELTS	11
BANDED V-BELTS	12
AGRICULTURE VARIABLE SPEED V-BELTS	13
JAPANESE COMBINE V-BELT	14
AUTOMOTIVE	15
RAW EDGE BELTS	16
TIMING BELTS	17
POLY V-BELTS	18
BANDED COG BELTS	19
SCOOTER BELTS	20

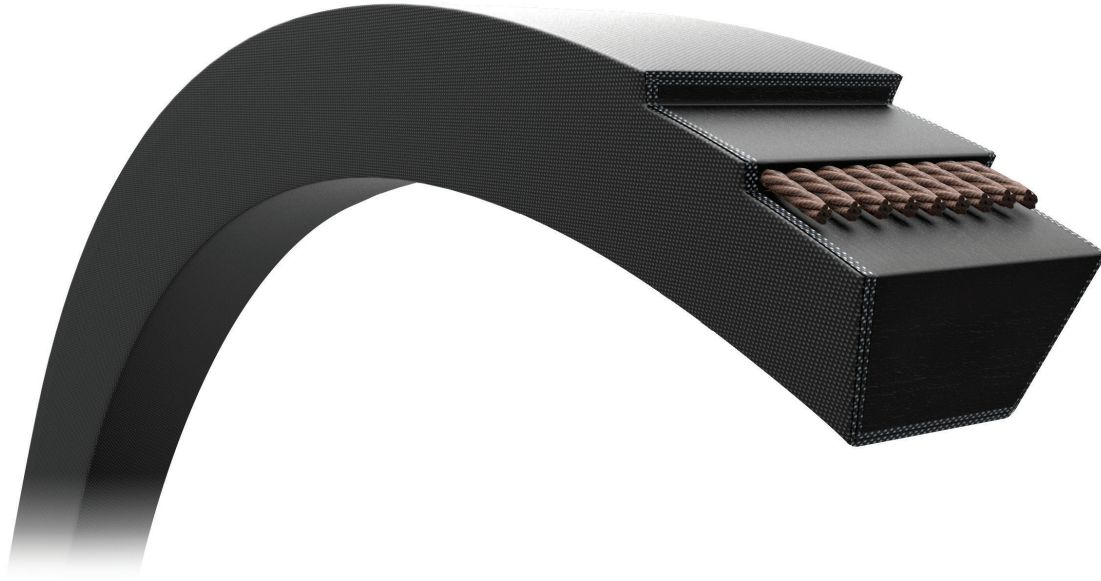


NEW INNOVATION

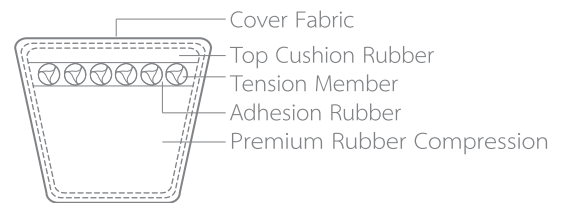
Industrial Belts Agricultural Belts Automotive Belts



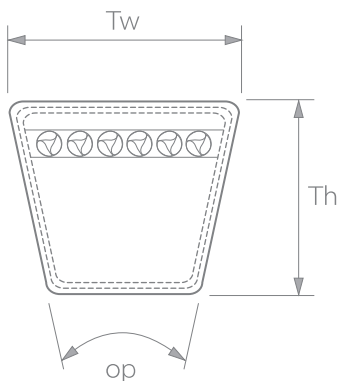
INDUSTRIAL BELTS

CLASSICAL WRAPPED V-BELTS

PRODUCT DESCRIPTION

The MITSUBA classical V-belts are a temperature and oil resistant, anti static designed for high speed and high torque drive with the premium quality significant, longer service life, and greater power transmission capabilities. Our 2-Ply Cover fabric is designed for Belt section B,C,D and E. Stiff cord construction is designed to suit B,C,D and E section.


APPLICATION

The MITSUBA classical V-belts are an all-round V-belt type with a wide range of applications in agricultural and industrial with a technically and economically good design for most ordinary drives.


SECTION PROGRAM

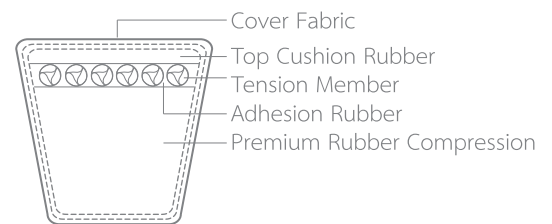
Section	Top width [mm]	Height [mm]	op [degree]	Length Range [inch]
M	10.0	5.5		18~70
FM	10.8	8.0		21~60
SA	12.7	7.0		23~39
A/13	12.5	9.0	40±1	19~487
B/17	16.5	11.0		20~500
C/22	22.0	14.0		34~500
D/32	31.5	19.0		88~490
E/40	38.0	24.0		150~487

METRIC WEDGE V-BELTS



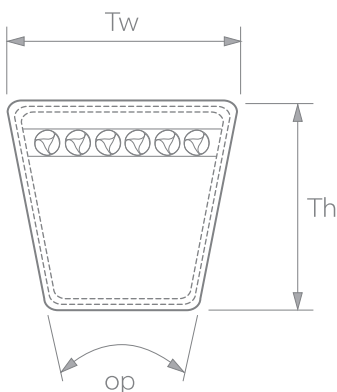
PRODUCT DESCRIPTION

The MITSUBA metric wedge V-belts are oil and heat resistance, and they are antistatic. The belt core compression rubber compression zone which is resistant to intensive heat stresses and compressions as well as the power transmitting cord, is wrapped in a fabric cover that provides both protection against external influences and uniform friction against the pulleys. Our 2-Ply Cover fabric is designed for SPB, SPC, and 8V. Stiff cord construction is designed to suit SPB, SPC, and 8V section.



APPLICATION

The MITSUBA metric wedge V-belts are used in industrial and agricultural machinery. They are specially suitable for drives with high belt speeds. The metric V-belt use up to 50% smaller pulley width than the classical dimension, allowing more compact drives. Since most new drives use universal pulleys, the classical belt can in most cases be replaced with a narrow V-belt, thereby achieving better power transmission and longer belt life.



SECTION PROGRAM

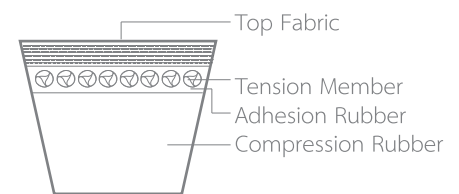
Section	Top width [mm]	Height [mm]	op [degree]	Length Range [mm]
SPZ/3V	9.7	8.0		487-6350
SPA	12.7	10.0		732-12360
SPB/5V	16.3	13.0	38±1	1150-12390
SPC	22.0	18.0		1780-12400
8V/25N	25.0	23.0		2159-12446

CLASSICAL RAW EDGE COG BELTS



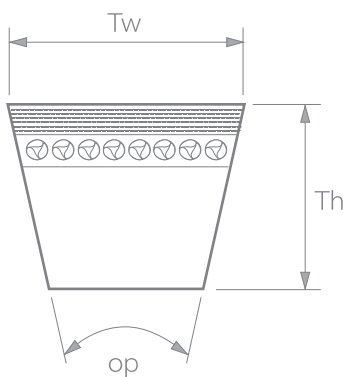
PRODUCT DESCRIPTION

The MITSUBA classical cog belt is engineered with specially formulated compound to give excellent sidewall wear resistance and bending stress resistance. The belts achieve most high speed and high torque drives with considerable ease and having excellent oil and heat resistance as well as antistatic. The mould cog provides high flexibility and a good fit in the pulley grooves as well as a lower operating temperature, which increase belt life.



APPLICATION

The MITSUBA classical cog belt has a wide range of applications, especially in industrial drives with high belt speeds and small belt pulley diameters. This belt allows immediate improvement of existing drives which use wrapped belt.



SECTION PROGRAM

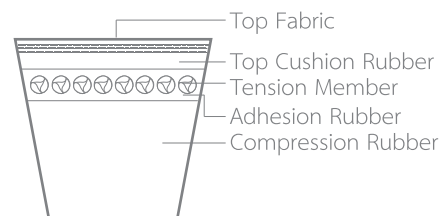
Section	Top width [mm]	Height [mm]	op [degree]	Length Range [inch]
FMX/10X	10.7	8.0	38±1	20~120
AX/13X	13.3	8.8		20~120
BX/17X	17.3	11.0		21~120
CX/22X	22.8	13.0		28~120

METRIC WEDGE COG BELTS



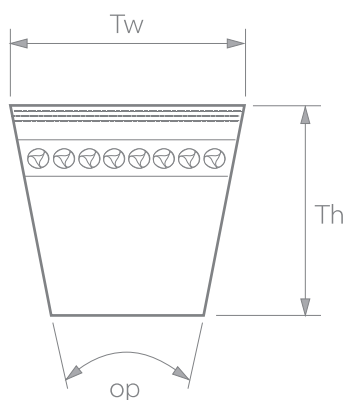
PRODUCT DESCRIPTION

The MITSUBA metric wedge cog belt is a temperature and oil resistant as well as antistatic. The mould cog provides high flexibility and a good fit in the pulley grooves as well as a lower operating temperature, which increases belt life.



APPLICATION

The MITSUBA metric wedge cog belt has a wide range of applications, especially in industrial drives with high belt speeds and high torque. This belt allows immediate improvement of existing drives which use wrapped belt, providing overall benefits with regards to economy as well as power transmission and reliability of operation.



SECTION PROGRAM

Section	Top width [mm]	Height [mm]	op [degree]	Length Range [mm]
XPZ/SPZX/3VX	9.7	8.0	38±1	515-3050
XPA/SPAX	12.7	9.0		525-3050
XPB/SPBX/5VX	16.3	13.0		530-3050
XPC/SPCX	22.0	18.0		740-3050

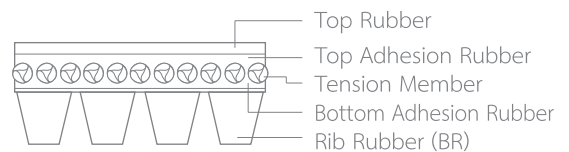
INDUSTRIAL BELTS

POLY V-BELTS



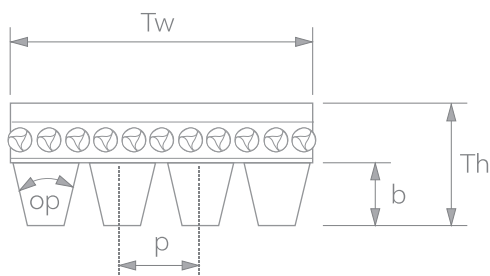
PRODUCT DESCRIPTION

The MITSUBA poly V-belt, also termed multi-ribbed belt, with the characteristic V-ribs which is resistant to oil and temperature stresses, static dissipating. The belts are developed to improve capacity with outstanding performance at higher speeds on smaller diameter pulleys. We offer full cord construction, such as nylon cord, polyester cord, glass cord, aramid cord.



APPLICATION

The MITSUBA poly V-belt is designed for high speed or high ratio applications that conventional v-belt cannot handle. Increasing the horsepower in 2/3 the space requires for normal belts. Small compressors, compressors(>30kW), Treadmill, Exercise Bikes, Washing Machines, Industrial Washing Machines, Dryer.

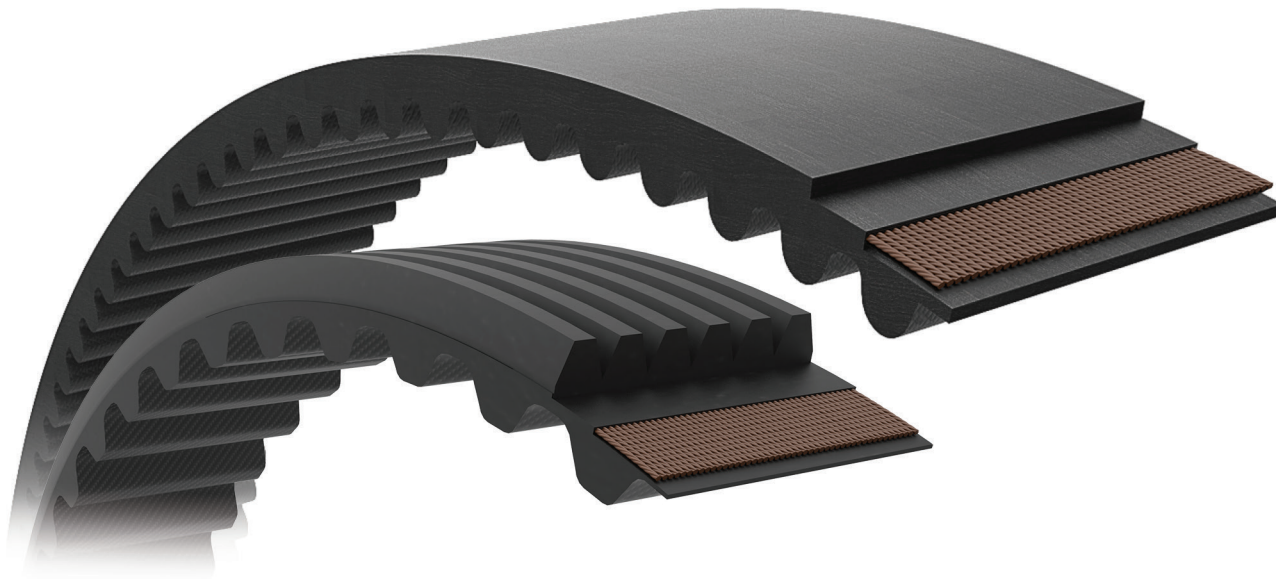


SECTION PROGRAM

Section	Rib pitch [mm]	Height [mm]	op [degree]	Length Range [inch]
PH	1.60	2.30		14~100
PJ	2.34	3.42	40±1	14~100
PL	4.70	6.50		49~240

180 J 6
 EFFECTIVE LENGTH 18 inches
 PULL EY TYPY (J)
 NUMBER OF RIBS 6RIBS

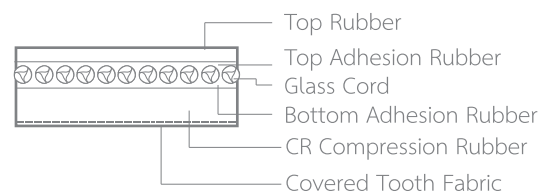
TIMING BELTS



PRODUCT DESCRIPTION

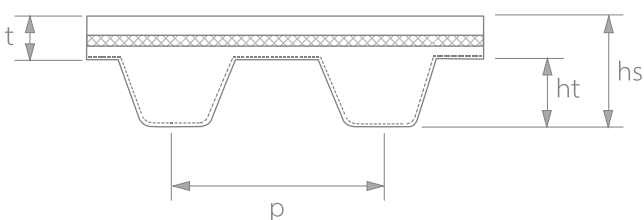
The MITSUBA Industrial Timing Belt is superior timing belts for various types of synchronous drives, with performing on a wide range of load capacities and speed ratios. The belt is non-slip engagement with constant angular velocity, relatively maintenance-free, and economical.

The MITSUBA Industrial Timing Belt is offering rubber timing belts with on back poly-V ribbed PK belt perfectly designed for the flour mills and rice industries.



APPLICATION

The MITSUBA Timing Belt is for maintenance-free performance on timing, can be used on industrial machinery e.g. food processing machines, robotic equipment, flour mills and rice industries etc.



SECTION PROGRAM

Section	p [mm]	hs [mm]	t [mm]	ht [mm]
L	9.525	3.600	1.69±0.25	1.91
H	12.700	4.300	1.81±0.25	2.49
3M	3.000	2.400	1.14±0.25	1.26
5M	5.000	3.600	1.45±0.25	2.17
MXL	2.032	1.140	0.63±0.25	0.51
S8M	8.000	5.120	2.07±0.25	3.05



NEW INNOVATION

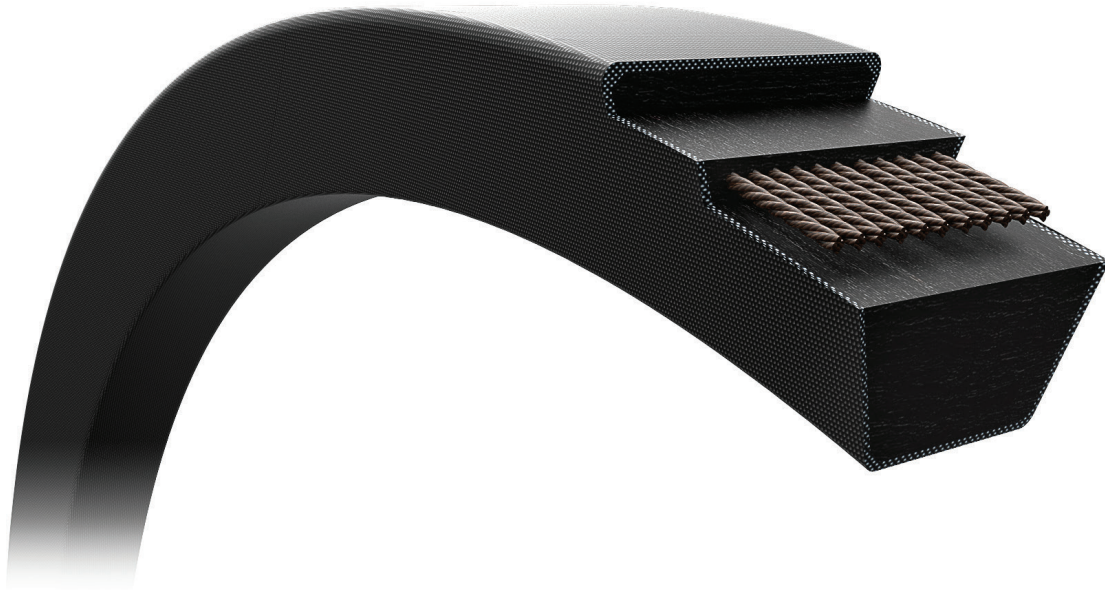
Industrial Belts Agricultural Belts Automotive Belts



AGRICULTURAL BELTS

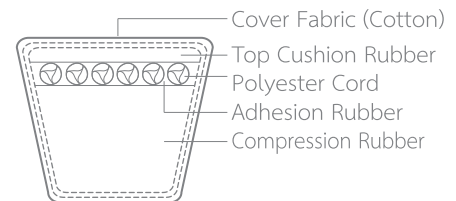
AGRICULTURE BELTS

CLASSICAL WRAPPED V-BELTS



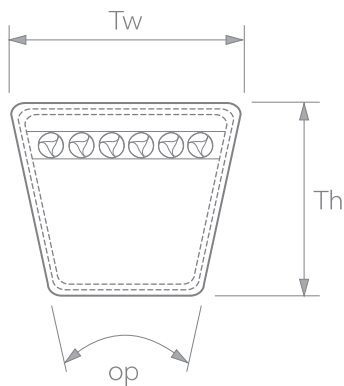
PRODUCT DESCRIPTION

The MITSUBA classical V-belts are a temperature and oil resistant as well as antistatic, designed for Agricultural Machinery, Rice Combine, and Harvesting Machine with the premium quality significant, and longer service life. Agriculture Grade.



APPLICATION

The MITSUBA classical V-belts are an all-round V-belt type with a wide range of applications in agricultural machinery with a technically and economically good design for most ordinary drives with higher power transmission capability.

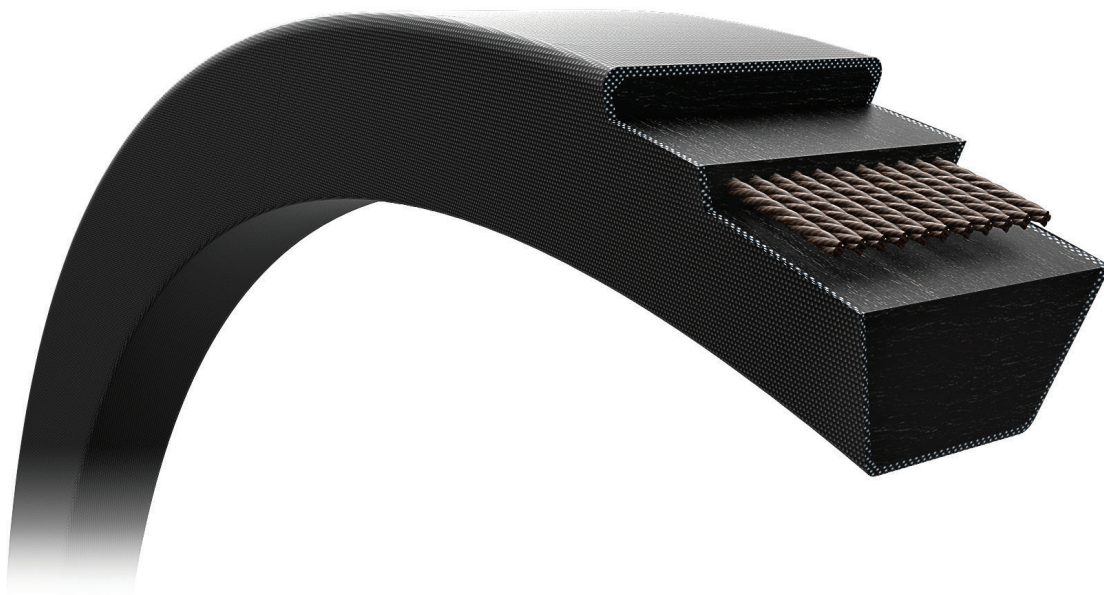


SECTION PROGRAM

Section	Top width [mm]	Height [mm]	op [degree]	Length Range [inch]
A/13	12.5	9.0	40±1	19~487
B/17	16.5	11.0		20~500
C/22	22.0	14.0		34~500
D/32	31.5	19.0		88~490
E/40	38.0	24.0		150~487

AGRICULTURE BELTS

COMBINE V-BELTS



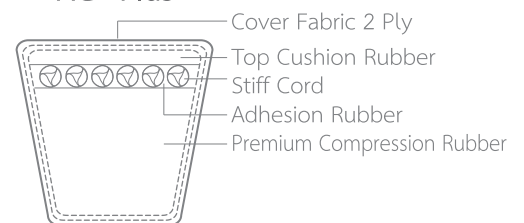
PRODUCT DESCRIPTION

The MITSUBA metric V-belts are oil and heat resistance, and they are antistatic. The belt core comprising rubber compression zone which is resistant to intensive heat stresses and compressions as well as the power transmitting cord, is wrapped in a fabric cover that provides both protection against external influences and uniform friction against the pulleys.

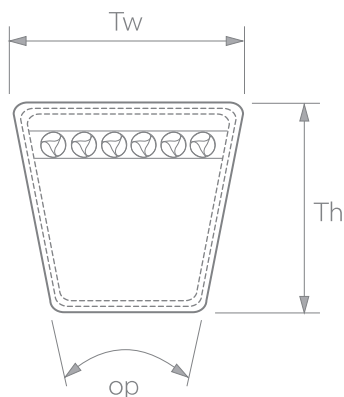
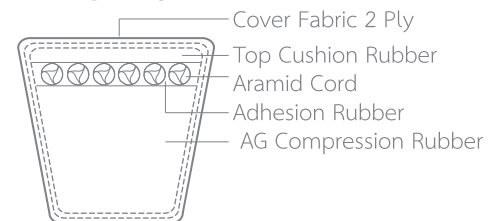
APPLICATION

The MITSUBA combine V-belts are used in combine and agricultural machinery. They are especially suitable for drives with high belt speeds, and allowing use of back idler.

AG - Plus



AG - Pro



SECTION PROGRAM

Section	Top width [mm]	Height [mm]	op [degree]	Length Range [mm]
B/17	16.5	11.0	40±1	508~12700
C/22	22.0	14.0	40±1	864~12700
SPB/5V	16.3	13.0	38±1	2133-12369
SPC	22.0	18.0	38±1	1981-12395

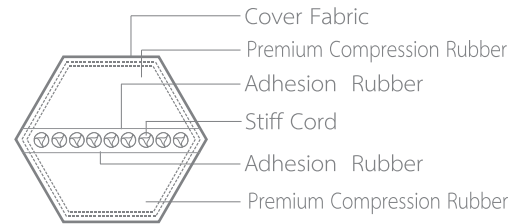
AGRICULTURE BELTS

DOUBLE V BELTS



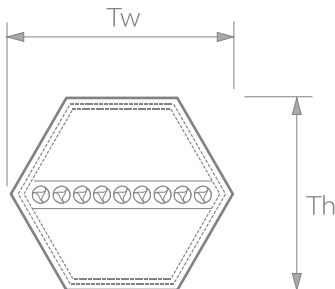
PRODUCT DESCRIPTION

The MITSUBA double V-belt combines temperature and oil resistance with antistatic features. The cord is placed at the centre of the belt cross section, making the belt flexible in both directions. The belts are able to transmit approx. 50% of the power ratings specified for the classical V-belt with the same top width.



APPLICATION

The MITSUBA double V-belt profile of the belt makes it suitable for drives with an S-bend and in which both sides of the belt have to be used for transmitting power. This type of drive is especially used in agricultural machinery. The belt is also used for special industrial drives.

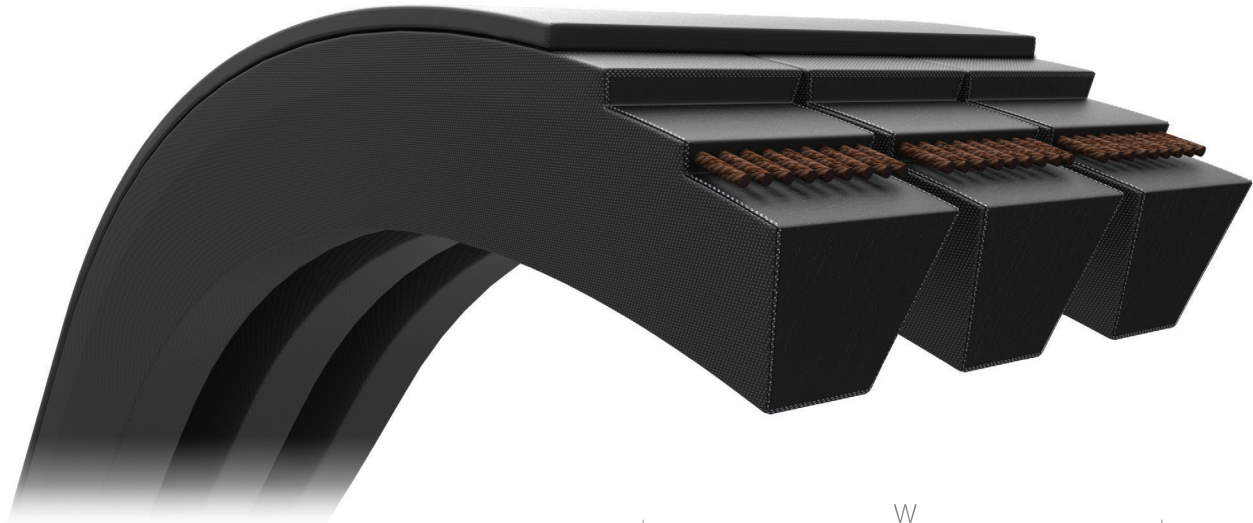


SECTION PROGRAM

Section	Top width [mm]	Height [mm]	op [degree]	Length Range [mm]
AA	13.0	10.0	40±1	1905-5080
BB	16.5	13.0		1905-6198
CC	22.0	18.0		1905-6198

AGRICULTURE BELTS

BANDED V-BELTS

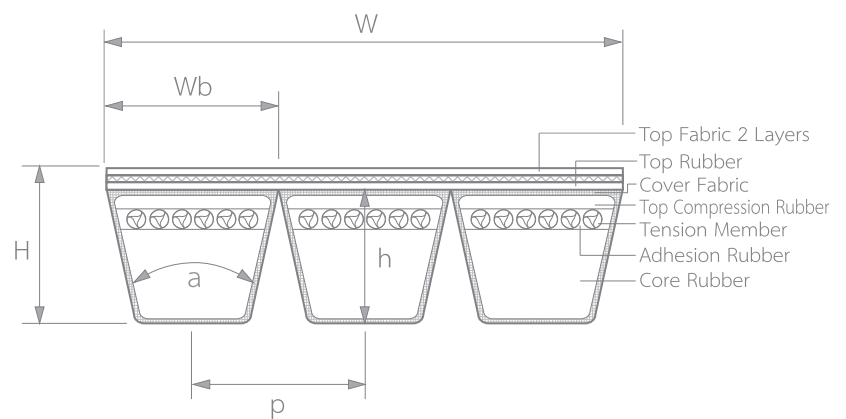


PRODUCT DESCRIPTION

Pulley is specially required in order to achieve the coupling effect. In addition to the performance characteristics of the various v-belts, the banded v-belt offers the following advantages as compared to single v-belts.

- No slip between the v-belts
- Better absorption of shock loads

Spec: Available in AG-Plus and AG-Pro Grade



APPLICATION

Agricultural machinery and particularly combine harvesters, they are often used as coupling belts, replacing single belt or instead of belt sets in order to reduce vibration and increased belt life.

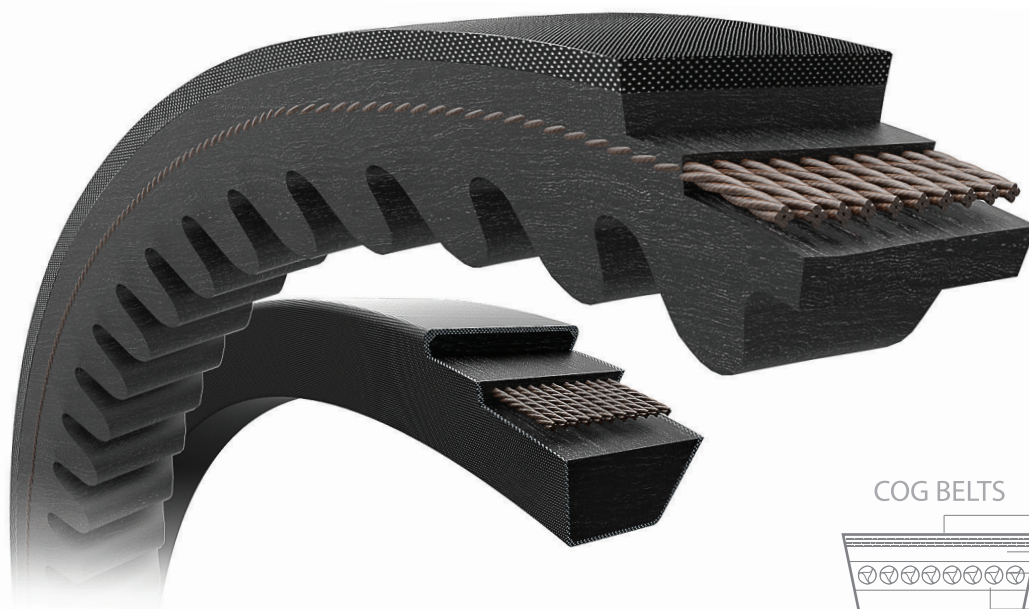
On industrial machinery also use with pulsating or shock pads, e.g. crushers, compressors, etc., as well as for drives in which the natural vibrations of a belt set may have an adverse effect on the operation of the machine, e.g. lathes, cutters and grinders.

SECTION PROGRAM

Section	Wb [mm]	P [mm]	H [mm]	h [mm]	a [degree]	N [no of Band]	Length Range [inch]
HB/RB	17.0	19.05	14.0	11.5	40±1	Max24	77~487
HC/RC	22.0	25.40	16.2	14.6	40±1	Max20	90~490
RSPA	12.7	15.00	14.5	10.5	38±1	Max30	77~485
RSPB	16.5	19.00	17.6	13.6	38±1	Max25	77~487
RSPC	23.0	25.50	20.0	16.0	38±1	Max18	88~488
R8V	25.0	28.60	27.0	23.0	38±1	Max16	90~487

AGRICULTURE BELTS

AGRICULTURE VARIABLE SPEED V-BELTS

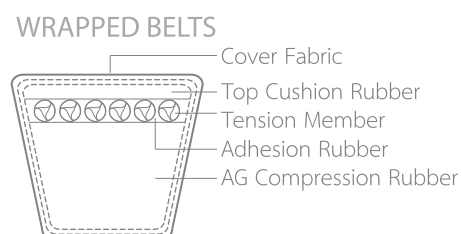
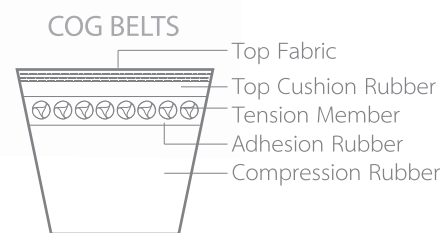


PRODUCT DESCRIPTION

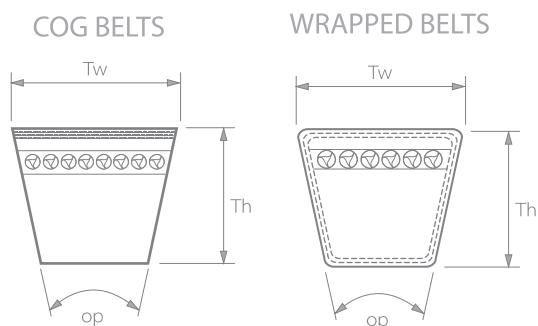
The MITSUBA agricultural variable speed V-belt (Cog Type and Wrapped Type) is temperature and oil resistant. The cord, the power transmitting element has been designed for heavy power transmission while at the same time ensuring a very high degree of length stability. A special rubber compound with textile fibres oriented across the length of the belt provides high stability and minimizes deflection in the transverse direction. The mould cog ensures maximum flexibility and optimum fit in the pulley grooves.

APPLICATION

The MITSUBA agricultural variable speed V-belt is used on agricultural machinery, and particularly combines harvesters.



SECTION PROGRAM ISO 3410



HM 2800

Datum belt length 2800 mm
Secton 50.0 x22.0 mm

Section	Top width [mm]	Height [mm]	op [degree]	Length Range [mm]
COG BELTS				
HI	25.0	13.0		
HJ	32.0	15.0		
HK	38.0	18.0		
HL	45.0	22.0	30±1	1270-3759
HM	50.0	22.0		
HN	57.0	24.0		
HO	63.0	25.0		
WRAPPED BELTS				
HL	45.0	22.0	30±1	1259-12446
HM	50.0	22.0		

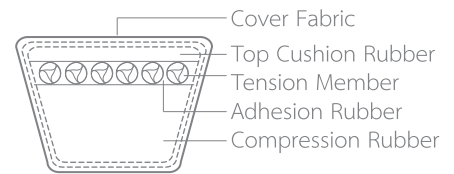
AGRICULTURE BELTS

JAPANESE COMBINE V-BELT

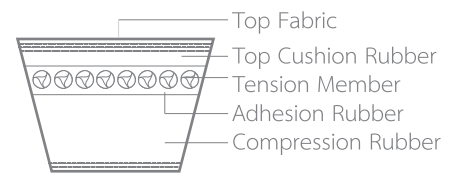


PRODUCT DESCRIPTION

The MITSUBA Japan Combine V-belt for agriculture machinery is available both wrapped type and cog type, all of which are temperature and oil resistant as well as antistatic. The belt is made with chloroprene rubber, wear resistant fabric cover, and Kevlar cord which providing an extraordinary and durability. Available in both Polyester Cord and Aramid Cord.



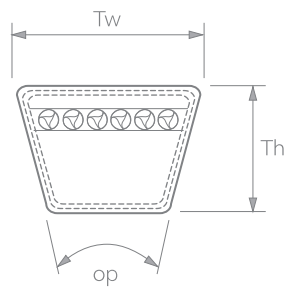
HP-800



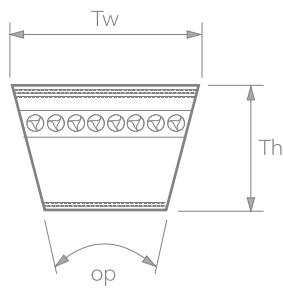
HPC-800

APPLICATION

The MITSUBA Japan Combine V-belt which makes it a top-end V belt for the agricultural machinery use enabling high-load power transmission under harsh environments.



HP-800



HPC-800

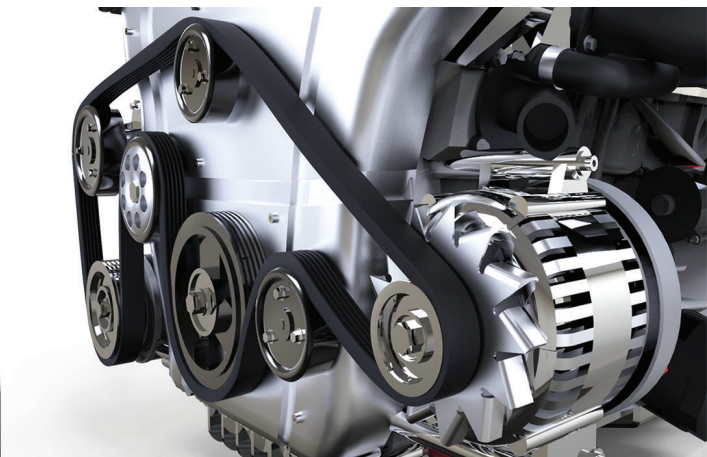
SECTION PROGRAM

Section	Top width [mm]	Height [mm]	op [degree]	Length Range [inch]
WRAPPED BELTS				
SB	16.5	10.0	38±1	47~495
SC	22.0	11.0		45~495
COG BELTS				
SBX	16.8	10.0	38±1	20~100
SCX	22.0	11.0		



NEW INNOVATION

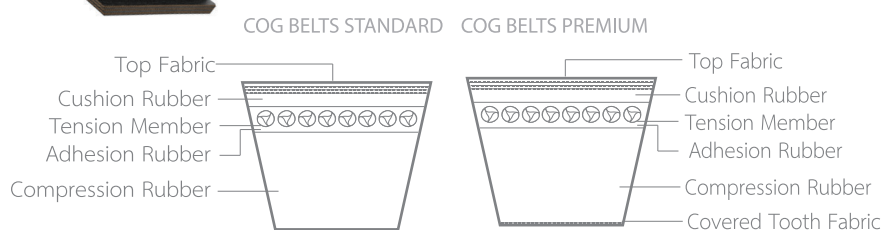
Industrial Belts Agricultural Belts Automotive Belts



AUTOMOTIVE BELTS

AUTOMOTIVE BELTS

CLASSICAL RAW EDGE BELTS



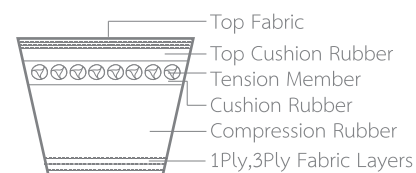
PRODUCT DESCRIPTION

The MITSUBA classical RE belt type with mould cog which is temperature and oil resistant as well as antistatic. The belts are tolerance stable, such that belts with the same section and length marking can be used immediately in matched sets. The mould cog provides high flexibility and a good fit in the pulley grooves as well as lower operating temperature, which increase belts life. Premium cog belt is designed for Bus and Truck Application.

APPLICATION

The MITSUBA classical RE belt has a wide range of applications with high belt speeds and small pulley diameters. The belt allows immediate improvement of existing drives which use wrapped bets, providing overall benefits with regards to economy as well as power transmission and reliability of operation.

RAW EDGE PLAIN, LAMINATE



SECTION PROGRAM

Section	Top width [mm]	Height [mm]	op [degree]	Length Range [mm]
---------	-------------------	----------------	----------------	----------------------

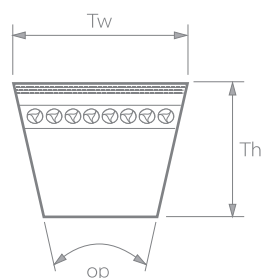
RAW EDGE COG BELTS

9.5X__La	10.7	8.0		
10AVX	10.7	8.0		
13AVX	13.3	8.8		
12.5X__La	13.3	8.8	38±1	533-2540
RE_MF 1XXX	10.7	8.0		
RE_MF 6XXX	13.3	8.8		
RE_MF 8XXX	17.3	11.0		
RE_MF 9XXX	22.8	13.0		

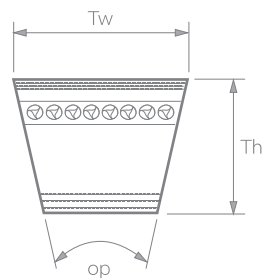
RAW EDGE LAMINATE/PLAIN BELTS

9.5X__LA	10.7	7.5		
12.5X__LA	13.3	7.5		
RE_MF 1XXX	10.7	7.5	38±1	533-2540
RE_MF 6XXX	13.3	7.5		
RE_MF 8XXX	17.3	9.5		

RAW EDGE COG BELTS



RAW EDGE PLAIN, LAMINATE



AUTOMOTIVE BELTS

TIMING BELTS



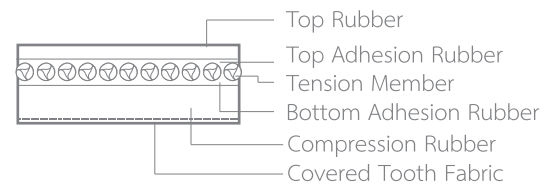
PRODUCT DESCRIPTION

The MITSUBA Timing Belt is designed with tooth profile feature better stress desperation and less noise drive at high speed operation. The belt is smooth engagement with the pulley, giving more power, longer service life, and greater dependability with the high ratio or high speed drives. We offer wide range for Automotive Application, such as, Japanese, Korean, Americans, and European Vehicle.

Spec : CR (Suitable for Aftermarket)

: FHN (Suitable for OES, Aftermarket)

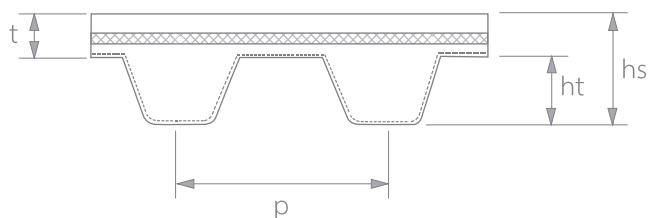
: H.NBR (Suitable for OES, OEM)



APPLICATION

The MITSUBA timing belt is for maintenance-free performance on timing and positive drive applications.

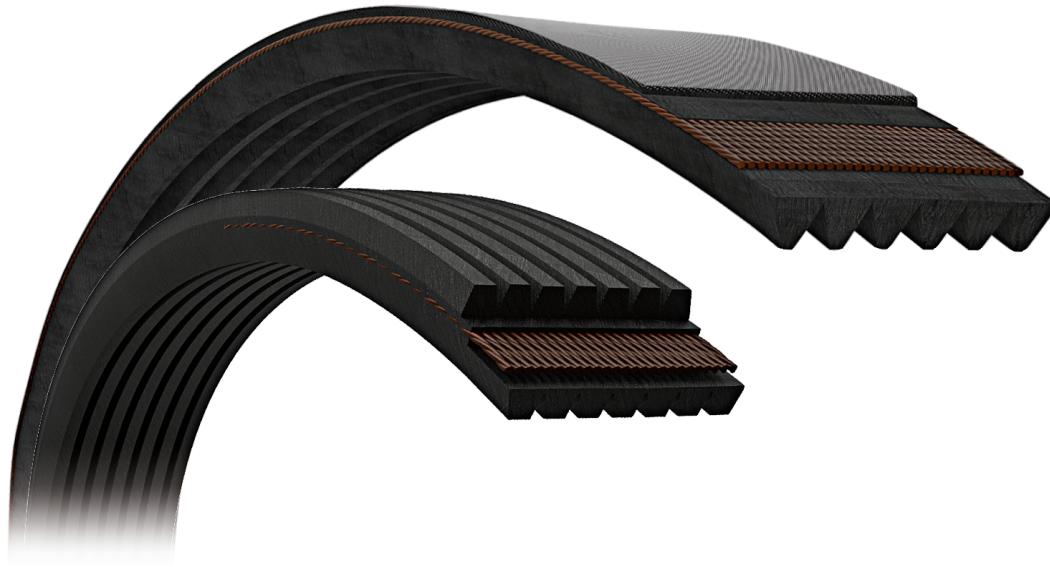
SECTION PROGRAM



Section	p [mm]	hs [mm]	t [mm]	ht [mm]
MR	9.525	5.25	2.02±0.25	3.50
RU	9.525	5.25	1.84±0.25	3.41
YU	8.000	5.11	2.11±0.25	3.00
ZAS	9.525	4.43	2.11±0.25	2.32
ZA	9.525	4.02	2.11±0.25	1.91
ZBS	9.525	4.87	2.11±0.25	2.76
S8M	8.000	5.12	2.07±0.25	3.05
MY	8.000	5.03	2.02±0.25	3.01
ZB	9.525	4.32	2.03±0.25	2.29
STD	8.000	4.74	1.84±0.25	2.90
HTDN I (RPP)	9.525	5.51	2.21±0.25	3.30
HTDN II (SHD)	9.525	5.52	2.02±0.25	3.50

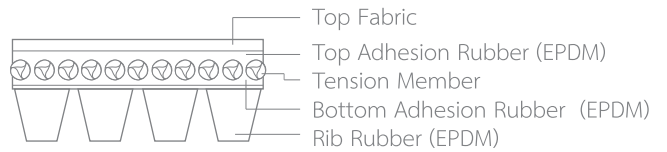
AUTOMOTIVE BELTS

POLY V-BELTS



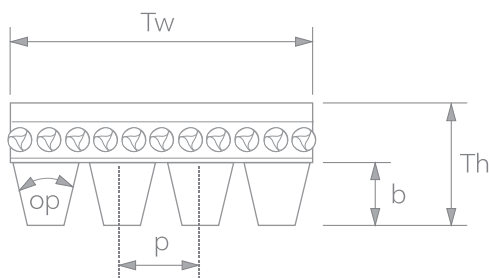
PRODUCT DESCRIPTION

The MITSUBA poly V-belt, also termed multi-ribbed belt, with the characteristic V-ribs which is resistant to oil and temperature stresses, static dissipating. The belts are developed to improve capacity with outstanding performance at higher speeds on smaller diameter pulleys. The V-profiles of the belt are in a special formulated rubber compound with direction oriented fibres that cut noise and provide very high flexibility and stability.



APPLICATION

The MITSUBA poly V-belt can replace several traditional belts and reduce operating costs considerably. The belt also distinguishes themselves by their light and vibration free operation and long life. The low cross section of the multi-rib belt makes it very flexible and permits it to be used in serpentine drives.



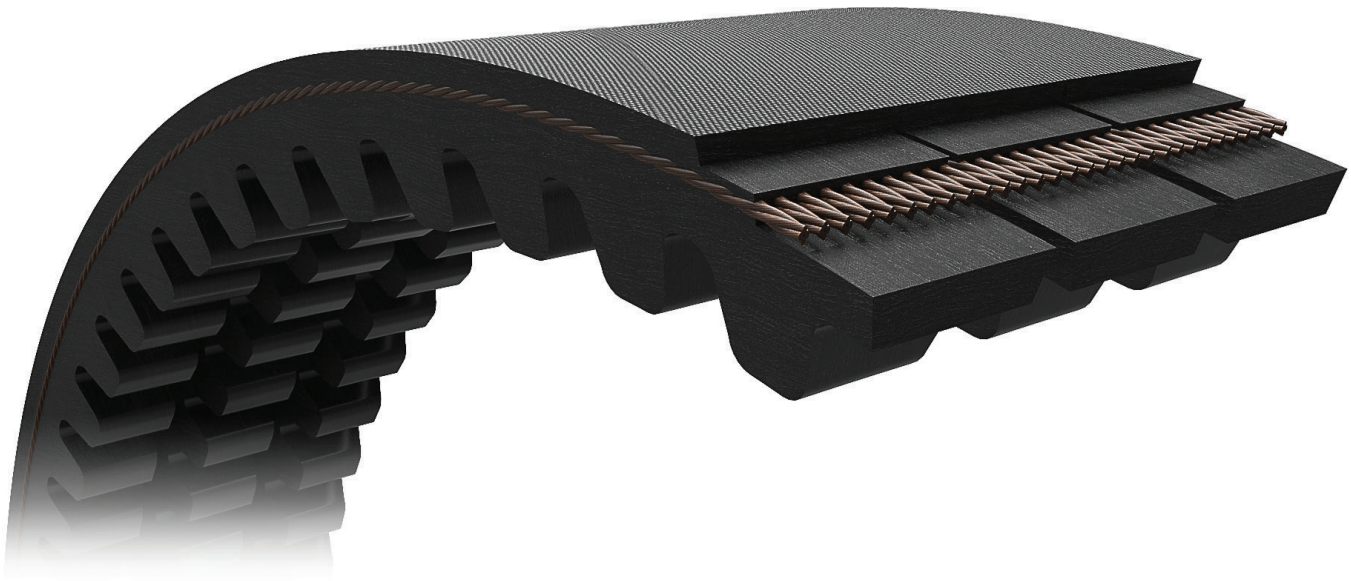
SECTION PROGRAM

Section	Rib pitch [mm]	Height [mm]	Length Range [mm]
PK	3.56	4.3~4.6	533-2540
DPK	3.56	6.2~6.5	533-2540



AUTOMOTIVE BELTS

BANDED COG BELTS

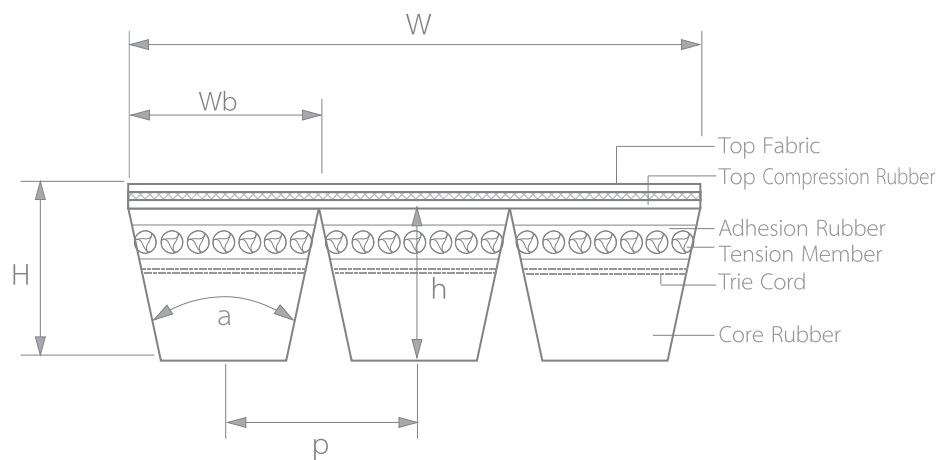


PRODUCT DESCRIPTION

The MITSUBA banded cog belt is consist of several cog-belt joined together which is high stability and smooth running on the toughest drives.

APPLICATION

The MITSUBA banded cog belt is designed for automotive application such as bus and truck. It is also available for industrial use. and Argriculture purposes.

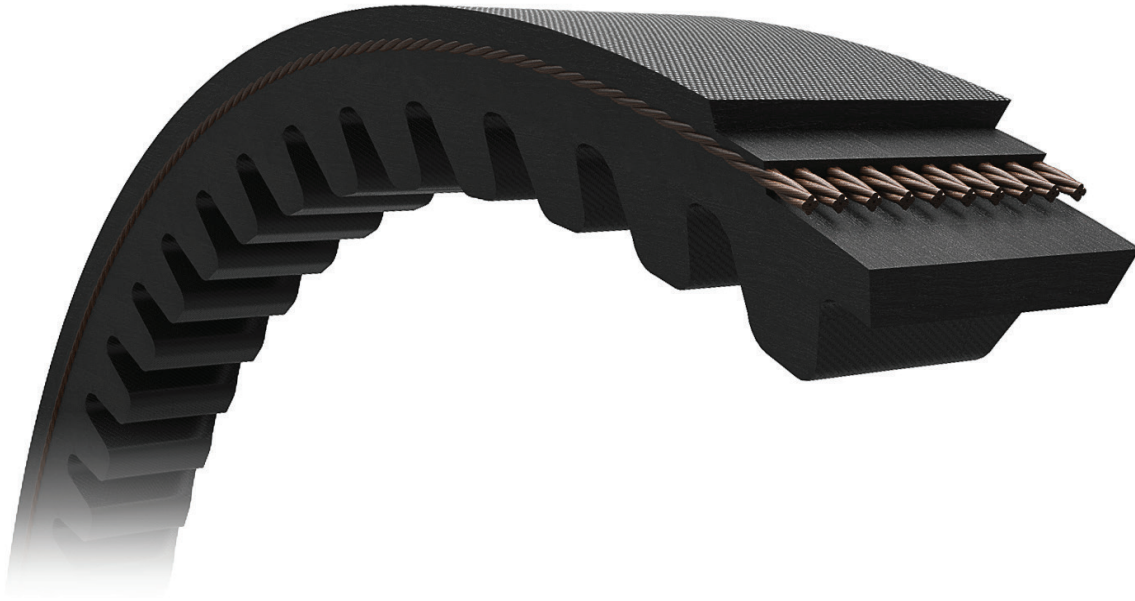


SECTION PROGRAM

Section	Wb [mm]	P [mm]	H [mm]	N [no of Band]	a [degree]	Length Range [inch]
R3VX	10.3±0.5	10.30	9.7±0.5	Max8	38±1	30~125
R5VX	15.5±0.5	17.50	16.5±0.5	Max7		
RAX	13.0±0.5	15.50	10.4±0.5	Max8		
RBX	17.0±0.5	19.05	12.7±0.5	Max8		

AUTOMOTIVE BELTS

SCOOTER BELTS



PRODUCT DESCRIPTION

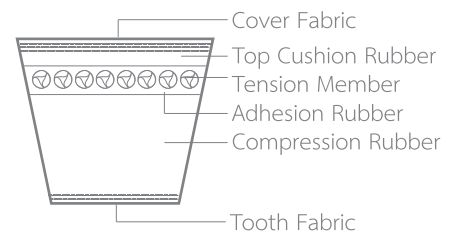
The MITSUBA scooter belt has high endurance with lateral pressure of pulley and shows good conformity with CVT system. High modulus bottom fabric makes it possible to increase flexibility and enhanced compression makes more anti-heat resistance of the belt.

Spec : Premium Grade

: W.Grade

: High Performance Grade

: Top Cog Grade



APPLICATION

The MITSUBA scooter belt specially designed for variable speed applications tailored for maximum range rigidity for full tensile cord support. The belt tailored manufacturing for the variable speed drive and scooter needs.

AUTOMOTIVE BELTS

SCOOTER BELTS CLASS

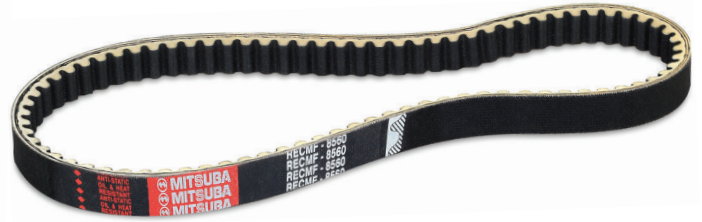
PREMIUM GRADE



The MITSUBA scooter belt has high modulus bottom fabric makes it possible to increase flexibility and enhanced compression makes more anti-heat resistance of the belt.

SCOOTER BELTS CLASS

W. GRADE



The MITSUBA scooter belt W. Grade is engineered with specially formulated compound to give and excellent sidewall wear resistant and less heat of the belt.

SCOOTER BELTS CLASS

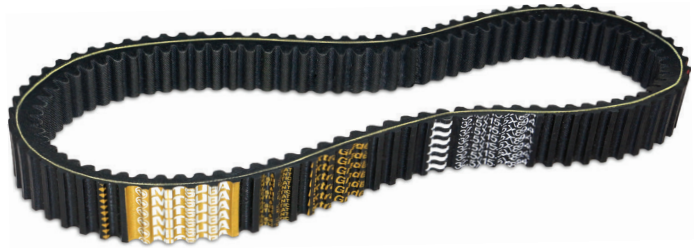
HIGH PERFORMANCE GRADE



The MITSUBA scooter belt high performance grade is characterized by the aramid cord inserted which provides high performance and thermostability to the belt and thus reduced elongation in particular when starting, and guarantees a resistance to wear that is twice as high as polyester cord.

SCOOTER BELTS CLASS

TOP COG GRADE



The MITSUBA scooter belt top cog grade is tailored manufacturing for big cc engine scooter and other CVT drives, such as ATV and snow-mobil. The belt is specially designed for variable speed application tailored for maximum range of speed changes with transverse rigidity for full tensile cord support by the Kevlar cord inserted. The indentation at the back of the belt provides maximum flexibility and improved cooling of the belt during operation.



NEW INNOVATION

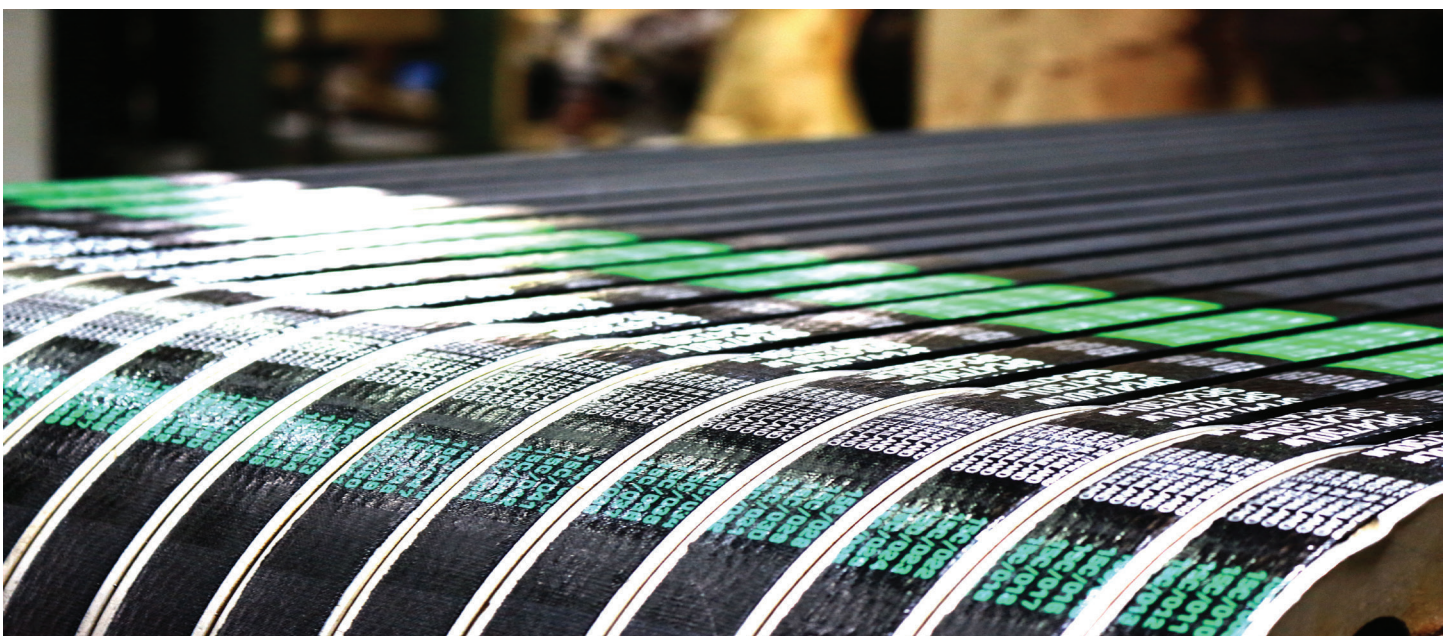
Industrial Belts Agricultural Belts Automotive Belts

ROTO CURING PROCESS

Roto curing Classical V Belt V-Belt as today's common tool for power transmission moder machinery. To enhance the quality and performance of classical v belt to its fu est potential. TSAR has decided to bring in a world-class production system from West-Germany to provide our customer with leading edge product at down to earth competitive cost that only before been available at premium pricing from few European manufacturers.

Why Roto curing belt?

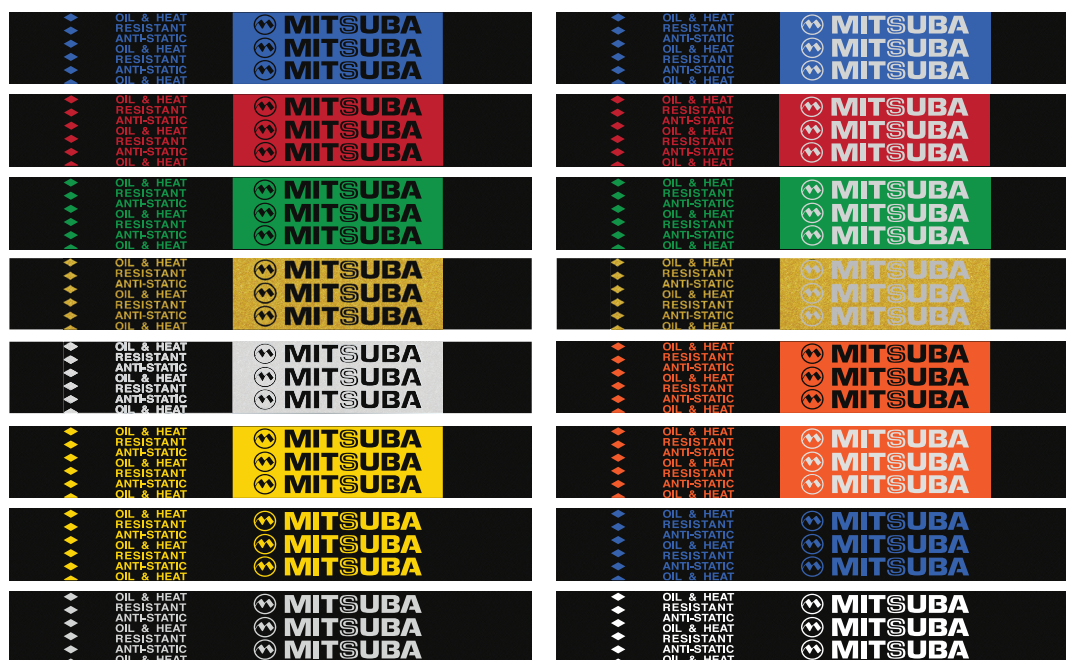
1. The unique characteristic of Rotary curing process applies high pressure tensing to all belts. It helps in building bet's length stability throughout the cuning cycle thus results in giving the final belts production with virtually very precisely belts length that are demanded in multi-belts drive application.
2. The "Pre-Stretch" technique helps to reduce belt elongation problem associate with initial installation.
3. Customers are able to differentiate our unique feature of Rotor cure belt by the wine embossing pattern appear on the back surface of belts.
4. Rotor cure belt has a perfect symmetrical balance and excellent weight distribution results in a very smooth and vibration-free drive. It is highly recommended for long span pulley distance and multi-belts drive application.
5. The Rotor cure belt helps you to reduce eliminates downtime on maintenance cost and repeated re-tension services.
6. Providing a longer life performance than conventional belt due to smoother running drive and lower slippage of belts results cooler running belt.



NEW INNOVATION

Industrial Belts Agricultural Belts Automotive Belts

TRADEMARK BELTS



Section	BELTS SIZE	MOQ/PCS.
M, Z	18" - 70"	100
FM, 9.5	21" - 60"	100
A, 12.5, 13	18 " - 80 "	50
	81" +	30
B, 17	18" - 80"	40
	81" +	25
C, 22	34" - 120"	20
	121" +	20
D, 32	88" - 490"	12
E	100" - 487"	10
AA	75" - 240"	17
BB	75" - 240"	26
CC	80" - 240"	18
SPZ, 3V	1000 - 6350 mm.	70
SPA	1000 - 2119 mm.	30
	2120 - 12360 mm.	24
SPB, 5V	1150 - 12390 mm.	50
SPC	1780 - 12400 mm.	18
8V	86" - 490"	16
HB, RB	76" - 487 "	24 Ribs/Mold
HC, RC	90" - 489 "	20 Ribs/Mold
R SPC	1780 - 12400 mm.	20
R 8V	90" - 487 "	16
RE_MF1xxx(9.5, 10, FMX)	533-2540mm.	85
RE_MF6xxx (12.5, 13, AX)	533-2540mm.	68
RE_MF8xxx (17,BX)	533-2540mm.	57
RE_MF9xxx (22,CX)	533-2540mm.	43
PK	3 PK	85
	4 PK	64
	5 PK	50
	6 PK	43
	7 PK	36
	8 PK	32
PL	45" - 92"	15 Sleeves
ALL SIZES	1145 - 2330mm.	
PJ	40 RIB	24 Sleeves
ALL SIZES	60 RIB	18 Sleeves
	200 RIB	6 Sleeves
SCOOTER BELT	Full Range	1 Sleeves
ALL SIZES		
TIMING BELTS		50
ALL SIZES		



Distributed by



INFORMATION

TEL : +662-427-7100

WWW.MITSUBABELTS.COM